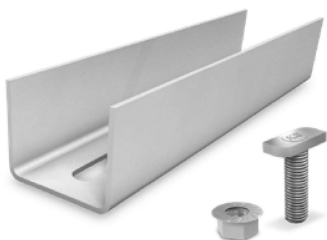


K2 SolidRail Connector Set



Article number		Sales Unit	Packing Unit	
1004107	For K2 SolidRail XS, UltraLight or Light, Length 200 mm	10	80	
1004109	For K2 SolidRail Medium or Alpin, Length 200 mm	10	70	

For quick and easy connection of two K2 SolidRail. Set including screws and nuts.

Material: Aluminium EN AW-6063 T66 / Stainless steel A2

K2 T-Bolt 28/15



Article number		Sales Unit	Packing Unit	
1000614	Screw thread: M8x20 mm	100		
1000368	Screw thread: M8x30 mm	100		
1000637	Screw thread: M10x20 mm	100		
1000041	Screw thread: M10x30 mm	100		

T-bolt to be placed anywhere into the chamber of the rail. It can be placed and readjusted to any place of the rail. Head form: 28/15 with four cornered shaft

Head dimensions: 22,5x10,5x4 mm

Material: stainless steel A2 [1.4301]

K2 Hexagon flange nut with serration, similar ISO 4161



Article number		Sales Unit	Packing Unit	
1000043	Screw thread: M8	200		
1000042	Screw thread: M10	200		

The Serration prevents accidental release.

Material: stainless steel A2